



SCREEN: Mine Monitoring

SANSA 2019 Earth Observation Challenge



Aurora Geospatial

THE PROBLEM

Coal dust and smog plague lives in Mpumalanga

2019-06-27 12:59



(rank) is among the worst places in
ution by nitrogen dioxide and
according to Greenpeace. (Wikus

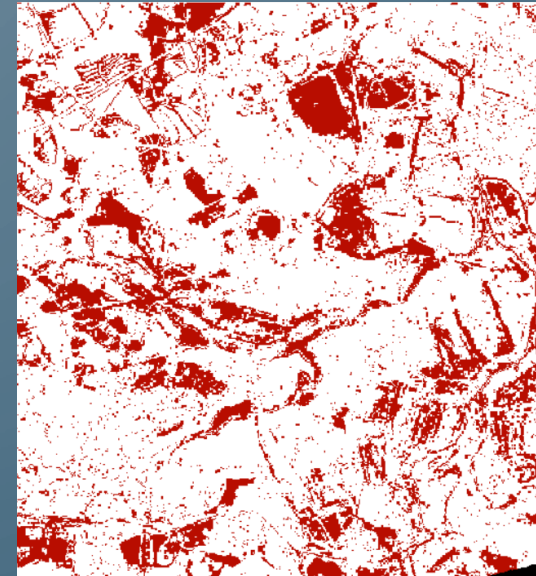
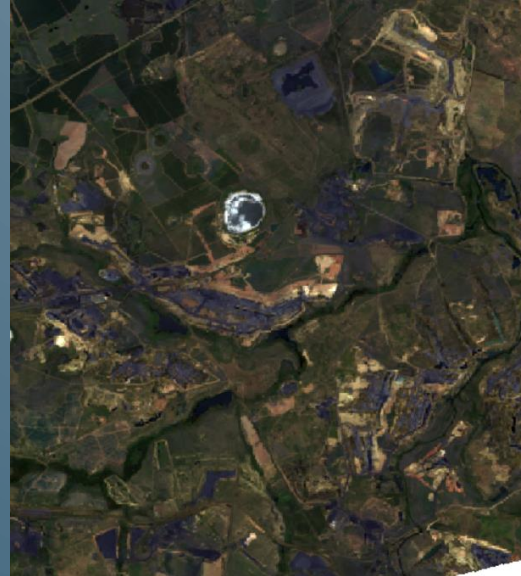
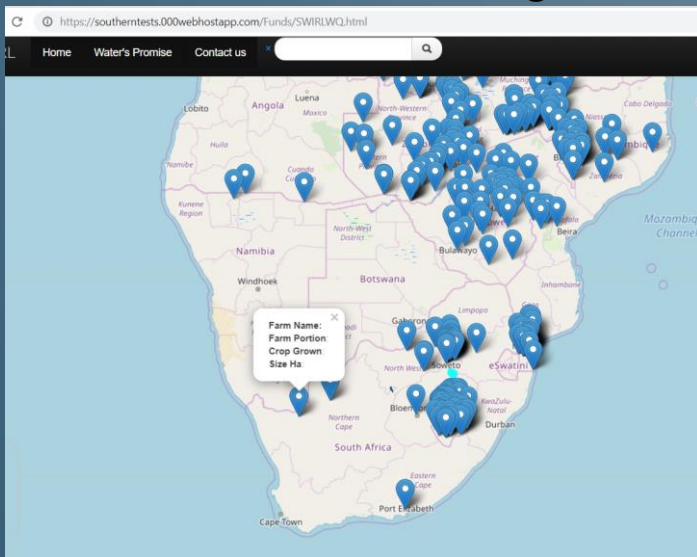
ser Galleries · News in Pictures
tures · Send us your stories

2000 premature deaths per year.

Coal dust suppression is not always to a sufficient extent.

THE PRODUCT

- An EO-data based web application that allows mines to review coal dust dispersion in mines and surrounding communities.

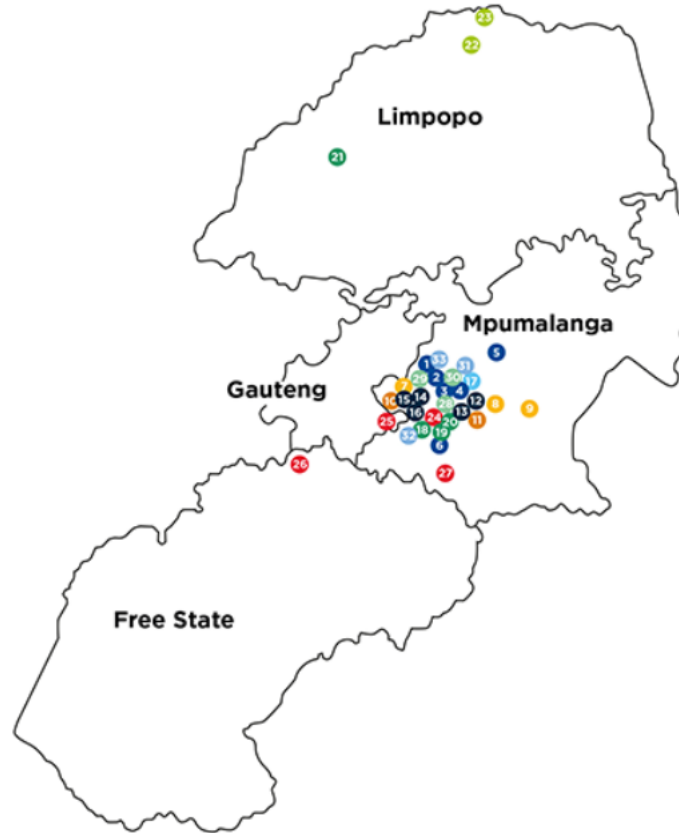


VALUE PROPOSITION

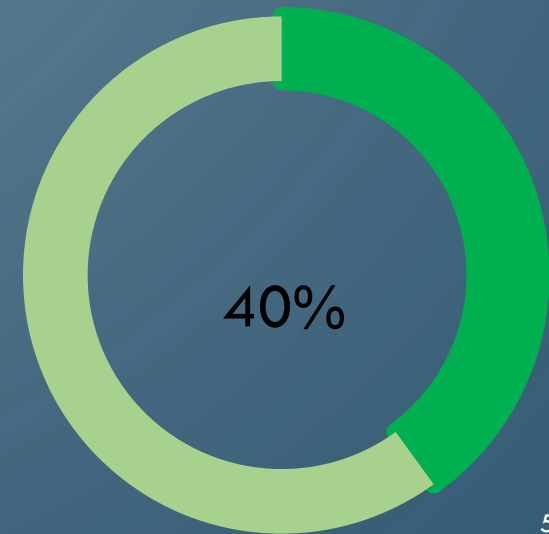
- Provide a timely, up-to date platform to review dust dispersion.
- No data processing, analysis and storage by end user.
- Off-site: No need for on-site data collection.

MARKET SIZE & OPPORTUNITY

WHERE COAL IS MINED IN SOUTH AFRICA



16 million Rands annually



COMPANY GROWTH AND INVESTMENT STAGE

Pre-seed/idea stage



Seed stage

Early stage

Initial growth stage

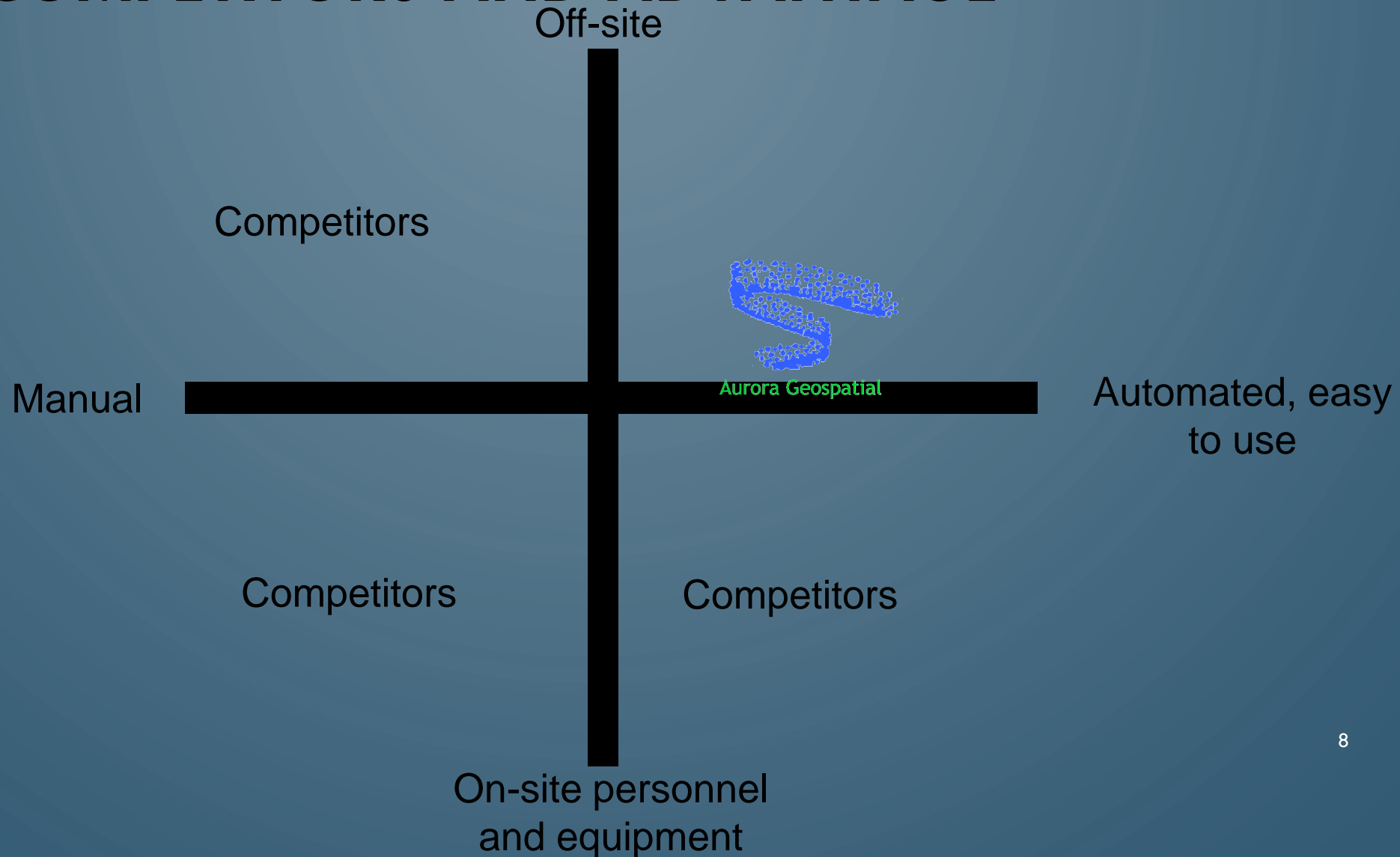
Rapid expansion stage

Maturity

OUR BUSINESS MODEL

- Our revenue streams are primarily based on subscriptions.
- Average monthly subscription R 50 000 per subscriber
- Scalability
 - Frequency and size of area
 - Expand into the SADC region
 - Value adds
 - Leveraging future open data and tools

OUR COMPETITORS AND ADVANTAGE



OUR TEAM



Mathabo Mthombeni

HR admin

Hons Degree in Psychology



Majaha Dalamini

Web applications

MSc in GIS and web dev



Craig Mahlasi

GIS and Remote Sensing

MSc in Remote Sensing

TRACK RECORD

- Currently providing geospatial solutions to clients in various sectors including utilities and environmental conservation.
- Several pro bono projects
- 2018 winner of the SAEO Challenge

FINANCIAL PROJECTION

13 subscriptions

Average Fee R50 000/per month

Projected revenue for year 1 : 5.5 million

FUNDING NEEDS

- We are looking for funding to complete the development of the product.
- R750 000 over the next 6 months
 - Development
 - Salaries/consultants
 - Workstations
 - Working space

CONTACT INFO



facebook.com/[AuroraGeospatial/](https://www.facebook.com/AuroraGeospatial/)



twitter.com/aurora_geo



aurorageo.co.za



info@aurorageo.co.za

Supported By



MINERALS COUNCIL
SOUTH AFRICA



sansa
SOUTH AFRICAN NATIONAL
SPACE AGENCY

